

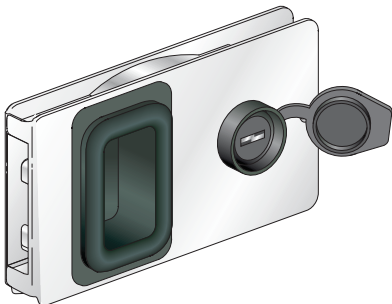
# CABIN & COCKPIT ENTRY HARDWARE

## MF Flush Entry Door Lock

A



FLUSH with Weather proof seal



FLUSH with Watertight seal



FLUSH OVAL Stainless steel



FLUSH Standard version, white

### DOOR THICKNESS: 12.7mm (1/2") or 10mm (3/8") with optional spacer.

The popular Flush sliding-door lock allows for a wide range of movement for sliding doors. The unique, low-profile design allows for a multitude of sliding door designs, even doors that retract into the bulkhead. The flush design allows companionway doors to slide into recessed pockets without interfering with the helm station.

- Allows for 100 - 150mm (4" - 6") more door travel than traditional sliding-door lock styles
- Safety lock prevents the door from being locked from the inside.  
To activate: turn key clockwise and remove
- Shipped with striker and two keys
- Locks can be matched to other Southco deck latches.  
Contact Southco Marine for more information

### Available Options:

Sealing: Weatherproof and watertight seals.

Material/Finish: Stainless Steel, Aluminum anodized, Black anodized or White powdercoat.

Shape: Oval or rectangular design.

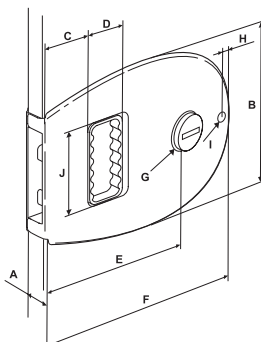
### Accessories.

Spacer to accept a 10mm (3/8") door thickness

Mounting tool for striker

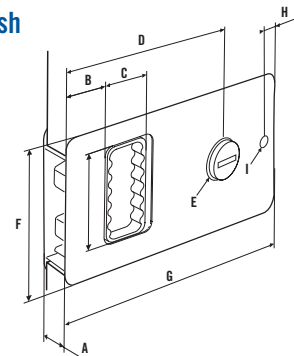
For spare keys please contact Southco Marine

### Flush Oval



	Imperial		Metric
	Nominal	Decimal	
A	1/2	.500	12.7
B	3 7/8	3.878	98.5
C	49/64	.768	19.5
D	49/64	.772	19.6
E	3 3/4	3.74	95
F	5 53/64	5.827	148
G	53/64	.827	21
H	33/64	.512	13
I	13/64	.197	5
J	1 3/4	1.752	44.5

### Flush



	Imperial		Metric
	Nominal	Decimal	
A	1/2	.500	12.7
B	1 1/8	1.122	28.5
C	25/32	.787	20
D	3 49/64	3.760	95.5
E	53/64	.827	21
F	2 7/8	2.875	73
G	5 9/32	5.281	134
H	21/64	.335	8.5
I	15/64	.236	6
J	1 3/4	1.752	44.5



# CABIN & COCKPIT ENTRY HARDWARE

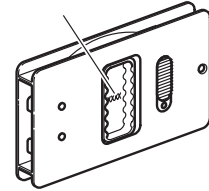
FLUSH PART NUMBERS				
STYLE	Aluminium	Stainless steel	Black	White
FLUSH	MF-01-110-60	MF-01-110-24	MF-01-110-50	MF-01-110-70
Weather proof	MF-02-110-60	MF-02-110-24	MF-02-110-50	MF-02-110-70
Watertight	MF-03-110-60	MF-03-110-24	MF-03-110-50	MF-03-110-70
OVAL	NA	MF-01-310-24	NA	NA
OVAL Weather proof	NA	MF-02-310-24	NA	NA
OVAL Watertight	NA	MF-03-310-24	NA	NA

How to determine your key combination

A

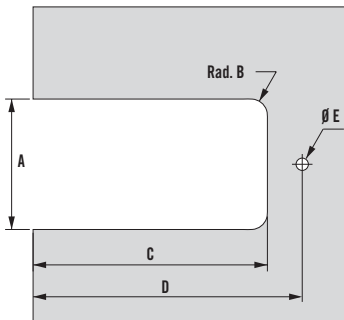
### Flush - Oval

Key # for ordering sparekey starting with 8\_\_ or 9\_\_



NA = Not Available

## Panel Preparation



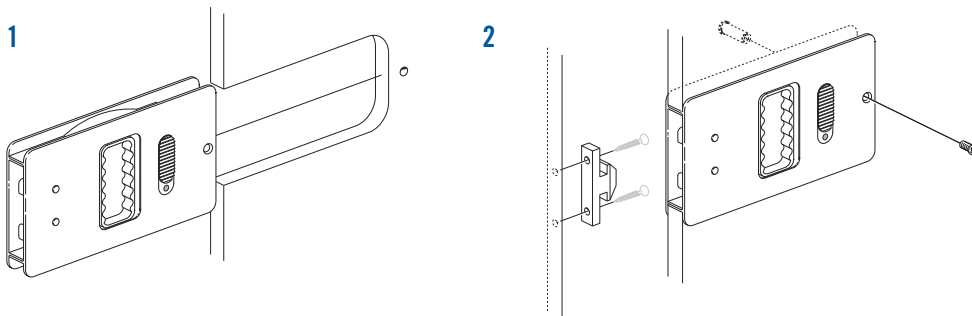
### Flush

	Imperial		Metric
	Nominal	Decimal	
A	2 1/2	2.5	63.5
B	5/16	.313	8
C	4 1/2	4.5	114
D	4 61/64	4.95	125.7
E	1/4	.25	6.4

### Flush Oval

	Imperial		Metric
	Nominal	Decimal	
A	2 1/2	2.5	63.5
B	5/16	.313	8
C	4 1/2	4.5	114
D	5 5/16	5.315	135
E	1/4	.25	6.35

## Installation



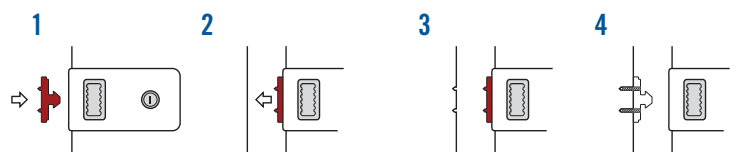
## Options

Spacer accessory available for doors that are 10 mm (3/8") thick. The spacers are available in clear or black anodized aluminium.

A keeper mounting tool is available that quickly marks the correct location for the keeper mounting screws



MF-92-100-50 Black anodized MF-92-100-60 Clear anodized



Mounting tool part numbers:  
Standard Flush: MF-90-102-10  
Stainless Steel Flush: MF-90-103-10

